

**HMGCS1 Antibody (Center)**  
**Purified Rabbit Polyclonal Antibody (Pab)**  
**Catalog # AP6652c****Specification**

---

**HMGCS1 Antibody (Center) - Product Information**

|                   |   |
|-------------------|---|
| Application       | WB, FC, IHC-P,E   |
| Primary Accession | <a href="#">Q01581</a>  |
| Other Accession   | <a href="#">P17425</a> , <a href="#">Q8JZK9</a> , <a href="#">P13704</a> , <a href="#">P23228</a> |
| Reactivity        | Human, Mouse  |
| Predicted         | Chicken, Hamster, Rat   |
| Host              | Rabbit  |
| Clonality         | Polyclonal  |
| Isotype           | Rabbit IgG  |
| Antigen Region    | 290-317   |

**HMGCS1 Antibody (Center) - Additional Information****Gene ID** 3157**Other Names**Hydroxymethylglutaryl-CoA synthase, cytoplasmic, HMG-CoA synthase,  
3-hydroxy-3-methylglutaryl coenzyme A synthase, HMGCS1, HMGCS**Target/Specificity**

This HMGCS1 antibody is generated from rabbits immunized with a KLH conjugated synthetic peptide between 290-317 amino acids from the Central region of human HMGCS1.

**Dilution**WB~~1:1000  
FC~~1:10~50  
IHC-P~~1:50~100  
E~~Use at an assay dependent concentration.**Format**

Purified polyclonal antibody supplied in PBS with 0.09% (W/V) sodium azide. This antibody is prepared by Saturated Ammonium Sulfate (SAS) precipitation followed by dialysis against PBS.

**Storage**

Maintain refrigerated at 2-8°C for up to 2 weeks. For long term storage store at -20°C in small aliquots to prevent freeze-thaw cycles.

**Precautions**

HMGCS1 Antibody (Center) is for research use only and not for use in diagnostic or therapeutic procedures.

**HMGCS1 Antibody (Center) - Protein Information**

**Name** HMGCS1 ([HGNC:5007](#))

**Synonyms** HMGCS

**Function** Catalyzes the condensation of acetyl-CoA with acetoacetyl-CoA to form HMG-CoA, which is converted by HMG-CoA reductase (HMGCR) into mevalonate, a precursor for cholesterol synthesis.

**Cellular Location**

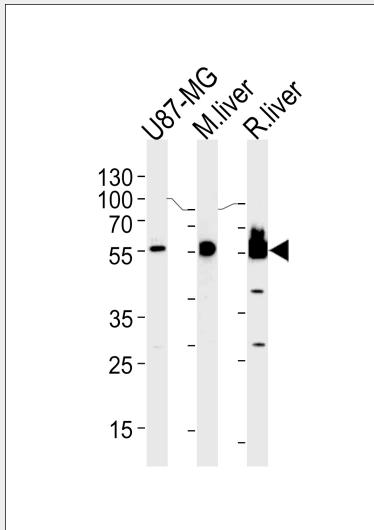
Cytoplasm.

### HMGCS1 Antibody (Center) - Protocols

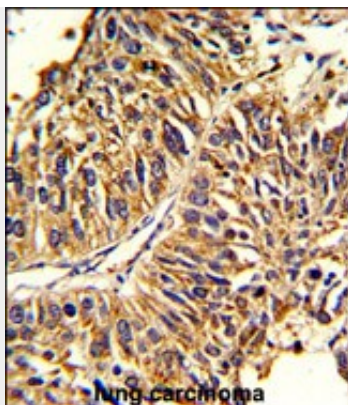
Provided below are standard protocols that you may find useful for product applications.

- [Western Blot](#)
- [Blocking Peptides](#)
- [Dot Blot](#)
- [Immunohistochemistry](#)
- [Immunofluorescence](#)
- [Immunoprecipitation](#)
- [Flow Cytometry](#)
- [Cell Culture](#)

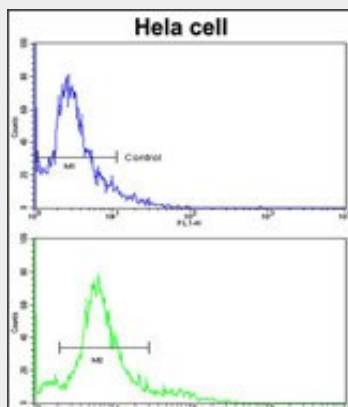
### HMGCS1 Antibody (Center) - Images



HMGCS1 Antibody (Center) (Cat.# AP6652c) western blot analysis in U87-MG cell line, mouse liver and rat liver lysates (35ug/lane). This demonstrates the HMGCS1 antibody detected the HMGCS1 protein (arrow).



Formalin-fixed and paraffin-embedded human lung carcinoma reacted with HMGCS1 Antibody (Center), which was peroxidase-conjugated to the secondary antibody, followed by DAB staining. This data demonstrates the use of this antibody for immunohistochemistry; clinical relevance has not been evaluated.



Flow cytometric analysis of hela cells using HMGCS1 Antibody (Center)(bottom histogram) compared to a negative control cell (top histogram). FITC-conjugated goat-anti-rabbit secondary antibodies were used for the analysis.

#### **HMGCS1 Antibody (Center) - Background**

HMGCS1 condenses acetyl-CoA with acetoacetyl-CoA to form HMG-CoA, which is the substrate for HMG-CoA reductase.

#### **HMGCS1 Antibody (Center) - References**

Vock,C., Cell. Physiol. Biochem. 22 (5-6), 515-524 (2008)

#### **HMGCS1 Antibody (Center) - Citations**

- [CYP51A1 induced by growth differentiation factor 9 and follicle-stimulating hormone in granulosa cells is a possible predictor for unfertilization.](#)